

SOLUTION

PCSAW SERIES

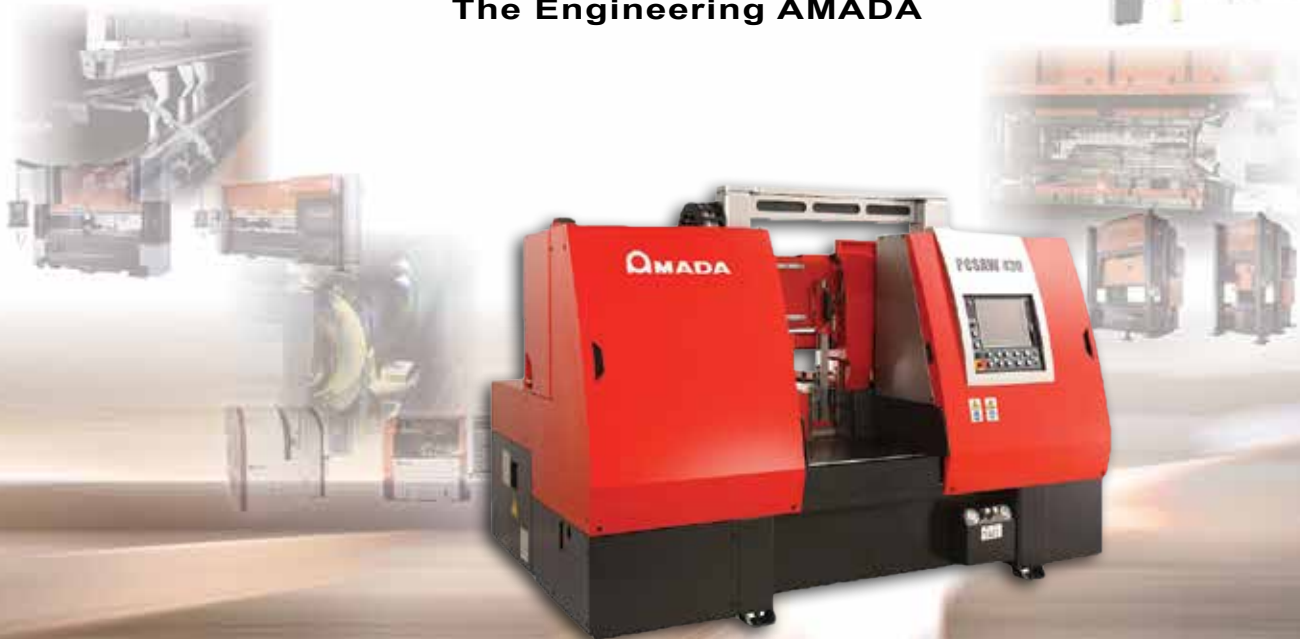
PCSAW330 • PCSAW430X/AX • PCSAW530X/AX • PCSAW720



The Vision of Precision



The Engineering AMADA



AMADA[®]
AMADA MACHINERY AMERICA, INC.

PULSE CUTTING TECHNOLOGY FOR HIGHER CUTTING RATES

PCSAW SERIES

PCSAW330 • PCSAW430X/AX
PCSAW530X/AX • PCSAW720



THE PCSAW330

comes with an Amada SMARTCUT band as standard equipment to help increase yield and reduce the amount of chips produced. The combination of the PCSAW330 and the SMARTCUT band helps minimize the cutting resistance and increases material yield by reducing kerf.

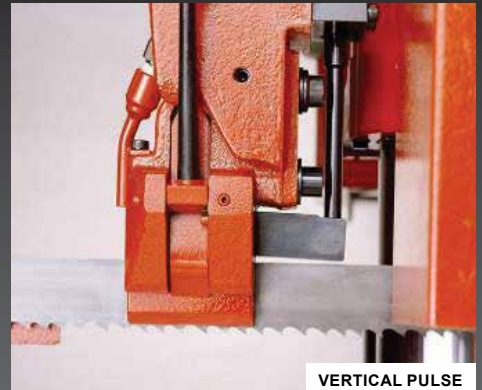
STANDARD FEATURES PCSAW330

- AUTO TRIM CUT
- CHIP CONVEYOR
- SPLIT FRONT VISE
- QUICK APPROACH
- FULL STROKE VISES
- MOTION DETECTOR
- VERTICAL PULSE CONTROL
- 99 STATION NC TOUCH PANEL
- BLADE DEVIATION MONITOR
- HYDRAULIC BLADE TENSION
- AC INVERTER SPEED CONTROL
- AUTO INITIAL MATERIAL POSITION

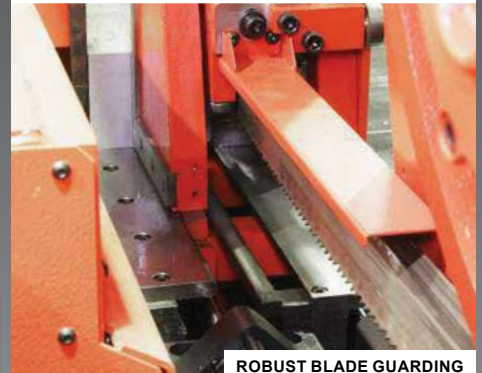
OPTIONAL FEATURES PCSAW330

- ROLLER TABLE 6 FT
- ROLLER TABLE 10 FT
- SIGNAL TOWER
- VERTICAL CLAMPS
- VISE PRESSURE CONTROL
- LOADING SYSTEM
- EXTERNAL GOOSE NECK CHIP CONVEYOR
- EXTENDED WARRANTY = Regular 1 year + Additional year Total 2 years

Specifications may change without notice at the sole discretion of Amada's Engineering Department.



VERTICAL PULSE



ROBUST BLADE GUARDING



DISCHARGE TABLE



CUTTING FLUID LEVEL DETECTOR



AUTOMATIC DUAL WIRE BRUSH SYSTEM

▶▶▶ **THE PCSAW430X/AX AND PCSAW530X/AX** models offer a variety of productivity enhancing features designed to improve cutting performance and operator efficiency. On the PCSAW430X and PCSAW530X, the cutting feed is controlled by a hydraulic flow control valve with stepping motor. The AX models of these two machines utilize a servo motor control for cutting feed.



STANDARD FEATURES

PCSAW430X/AX • PCSAW530X/AX • PCSAW720

- MOTION DETECTOR
- FULL STROKE VISES
- BLADE DEVIATION MONITOR
- VERTICAL PULSE CONTROL
- LARGE AREA CHIP CONVEYOR
- 3D AUTOMATIC ADJUSTING WIRE BRUSH
- WINDOWS®-BASED CNC CONTROLS
- BLADE SPEED CONTROLLED BY INVERTER
- CUTTING FLUID LEVEL DETECTOR
- HYDRAULIC BLADE TENSIONING
- AUTOMATIC POSITIONED GUIDE ARM
- FEED SYSTEM CONTROLLED BY SERVO MOTOR DRIVEN BALL SCREW (PCSAW430AX • PCSAW530AX)
- FEED CONTROLLED BY NC HYDRAULIC SYSTEM (PCSAW430X • PCSAW530X • PCSAW720)
- WHEEL COVER LIMIT SWITCH (PCSAW720)
- LASER BEAM QUICK APPROACH (PCSAW720)
- VIBRATION REDUCTION ROLLERS (PCSAW720)
- FLEXIBLE CONTROL PANEL LOCATION (PCSAW720)

OPTIONAL FEATURES PCSAW430X/AX • PCSAW530X/AX • PCSAW720

- ROLLER TABLE 6'
- ROLLER TABLE 10'
- VERTICAL CLAMPS
- RETURN CONVEYOR
- VISE PRESSURE CONTROL
- EXTERNAL GOOSE NECK CHIP CONVEYOR
- NON-POWERED ROLLER TABLE
- HYDRAULIC POWERED ROLLER TABLE (PCSAW720)
- EXTENDED WARRANTY = Regular 1 year + Additional year Total 2 years

Specifications may change without notice at the sole discretion of Amada's Engineering Department.

▶▶▶ **THE PCSAW720**

combines Amada's unique pulse cutting technology with the capacity to handle workpieces up to Ø28.3" (Ø720 mm) or 32" x 28" (815 mm x 715 mm). Pulse cutting technology reduces the cutting resistance, dramatically improving cutting rates.



*Pictures may include some optional equipment.
 *Some safety equipment may have been removed or opened to illustrate products clearly and must be in place, and functioning, prior to operation.



RETURN CONVEYOR



BLADE DATABASE



DOUBLE VIBRATION DAMPING ROLLERS



CHIP CONVEYOR



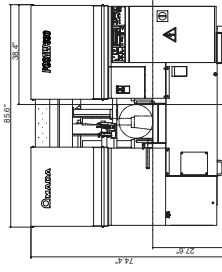
PULSE CUT

PRODUCT SPECIFICATIONS & DIMENSIONS

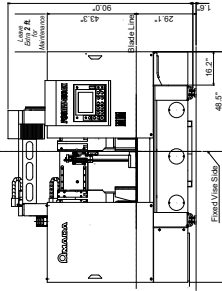
	PCSAW330	PCSAW430X/AX	PCSAW530X/AX	PCSAW720
Round Capacity	1.18" - 13" (30 - 330mm)	1.18" - 16.93" (30 - 430mm)	1.18" - 20.87" (30 - 530mm)	11.4" - 28.3" (289 - 720mm)
Rectangle Capacity (W x H)	13" x 13" (330 x 330mm)	16.93" x 16.93" (430 x 430mm)	20.87" x 20.87" (530 x 530mm)	32" x 28" (815 x 715mm)
Work Load Capacity	4,410 lb (2,000 kg)	6,613 lb (3,000 kg)	10,141 lb (4,600 kg)	17,640 lb (8,000 kg)
Material Index Stroke	19.685" (500mm)	19.685" (500mm)	19.685" (500mm)	19.685" (500mm)
Material Index Length	0.394" - 999.99" (10 - 9999.9mm)	0.394" - 393.70" (10 - 9999.9mm)	0.394" - 393.70" (10 - 9999.9mm)	0.787" - 393.70" (20 - 9999.9mm)
Remnant Length	2.283" (58mm) Plus Length of Parts	3.94" (100mm) Plus Length of Parts	3.94" (100mm) Plus Length of Parts	1.57" (40mm) Plus Length of Parts
Blade Size (L x T x W)	13.6" x 0.035" x 1-1/2" (4115 x 0.9 x 41mm)	20" x 0.063" x 2" (6100 x 1.6 x 54mm)	22.11" x 0.063" x 2-5/8" (7000 x 1.6 x 67mm)	27.3" x 0.063" x 2-5/8" (8300 x 1.6 x 67mm)
Blade Speed	49 - 394 ft/min (15 - 120 m/min) by Inverter	49 - 394 ft/min (15 - 120 m/min) by Inverter	49 - 394 ft/min (15 - 120 m/min) by Inverter	49 - 361 ft/min (15 - 110 m/min) by Inverter
Saw Blade Motor	5 HP (3.7 kW)	15 HP (11 kW)	20 HP (15 kW)	15 HP (11 kW)
Hydraulic Pump Motor	2 HP (1.5 kW)	3 HP (2.2 kW)	3 HP (2.2 kW)	5 HP (3.7 kW)
Pulse Cutting Motor	1/4 HP (0.2 kW)	1/8 HP (0.09 kW)	1/8 HP (0.09 kW)	1/8 HP (0.09 kW)
Cutting Fluid Pump Motor	1/4 HP (0.18 kW)	1/2 HP (0.25 kW)	1/2 HP (0.25 kW)	1/2 HP (0.25 kW)
Voltage Required	*13kVA, AC220V± 10%, 3 PH, 60 Hz	*17kVA, AC220V± 10%, 3 PH, 60 Hz	*22kVA, AC220V± 10%, 3 PH, 60 Hz	*25kVA, AC220V± 10% 3 PH, 60 Hz
Head Up Position (WxLxH)	85.6" x 99.6" x 74.4" (2175 x 2530 x 1891mm)	112.2" x 83.2" x 100.0" (2850 x 2113 x 2285mm)	127.6" x 83.2" x 102.5" (3240 x 2113 x 2603mm)	172.7" x 85.9" x 110.7" (4387 x 2181 x 2813mm)
Head Down Position (WxLxH)	85.6" x 99.6" x 74.4" (2175 x 2530 x 1891mm)	112.2" x 83.2" x 100.0" (2850 x 2113 x 2285mm)	127.6" x 83.2" x 102.5" (3240 x 2113 x 2603mm)	172.7" x 85.9" x 108.9" (4387 x 2181 x 2765mm)
Table Height	27.6" (700 mm)	27.6" (700 mm)	31.5" (800 mm)	27.6" (700 mm)
Machine Weight	3,970 lb (1,800 kg)	10,361 lb (4,700 kg)	12,125 lb (5,500 kg)	17,640 lb (8,000 kg)

*All Other Voltages Require Transformer

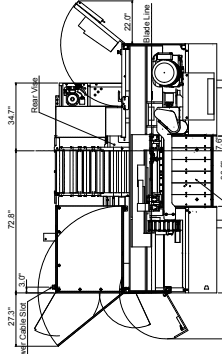
PCSAW330



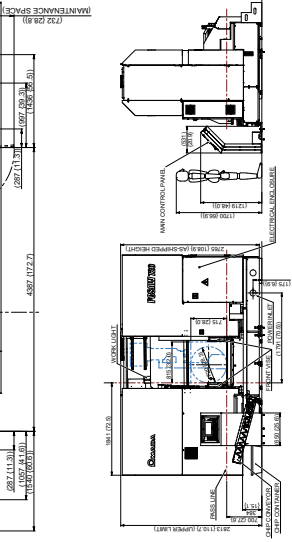
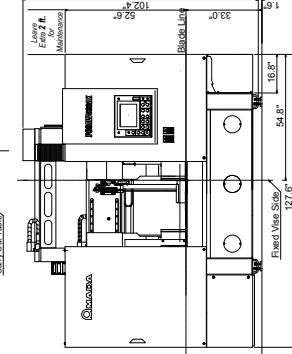
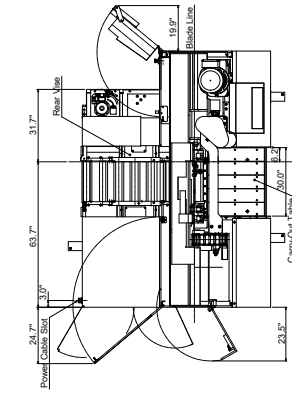
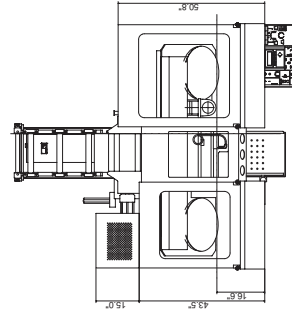
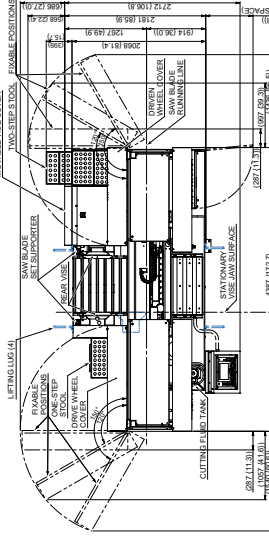
PCSAW430X/AX



PCSAW530X/AX



PCSAW720



Before using this product, please read the operator's manual carefully and follow all applicable instructions.

- When using our products, safety equipment is required depending on the operational task.
- Specifications, appearance and equipment are subject to change without notice by reason of improvement.
- Please use the machine model name as PCSAW330, PCSAW430X/AX, PCSAW530X/AX or PCSAW720 when applying for administration applications.
- For any inquiries, please contact local Amada Machinery America, Inc. office.

© AMADA MACHINERY AMERICA, INC. All Rights Reserved.



100 S Puente St • Brea, CA 92821
Phone: 847.285.4800 • Fax: 847.519.2127

www.amadamca.com

