

SOLUTION

HORIZONTAL STRUCTURAL BUNDLE

HKB6050CNC



The Vision of Precision



The Engineering AMADA



AMADA[®]
AMADA MACHINERY AMERICA, INC.

PRODUCT SPECIFICATIONS

	HKB6050CNC
Round Capacity Diameter	1" - 20" (25 - 500 mm)
Rectangle Capacity (W x H)	1" x 1" - 24" x 20" (25 x 25 - 600 x 500 mm)
Work Load Capacity	9,923 lbs (4,500 kg)
Blade Size (L x T x W)	19'4" x 0.050" x 2" (5890 x 1.3 x 54 mm)
Blade Speed	49-325 ft./min (15-100 m/min)
Blade Motor	7.5 HP (5.5 kW)
Hydraulic Pump Motor	2 HP (1.5 kW)
Cutting Fluid Pump Motor	1/4 HP (0.18 kW)
Voltage Required	AC220V±10%, 3 PH, 60 Hz All Other Voltages Require a Transformer
Power Requirement	11 kVA
Material Index Stroke	78.7" (2000 mm)
Material Index Length	0.394" - 999.999" (10.0 - 99999.9 mm)*
Remnant Length	0.6" or more (15 mm or more)
Head Up Position (W x L x H)	169.8" x 226.1" x 91.7" (4312 x 5742 x 2330 mm)
Head Down Position (W x L x H)	169.8" x 226.1" x 91.7" (4312 x 5742 x 2330 mm)
Table Height	28.8" (730 mm)
Machine Weight	15,215 lbs (6,900 kg)

*Automatic positioning cannot be performed when cutoff length is less than 1.2" (30 mm)



CONTROL PANEL



BUNDLE CUTS



VERTICAL CLAMP



10' ROLLER TABLE

STANDARD FEATURES

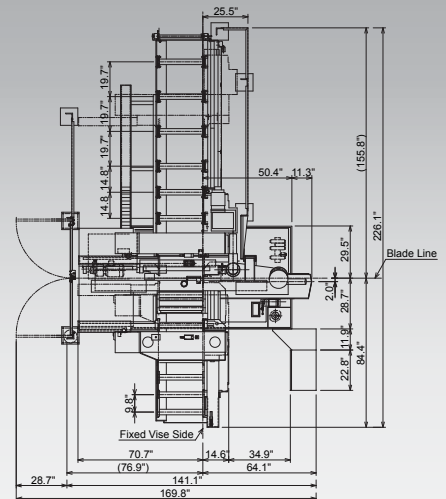
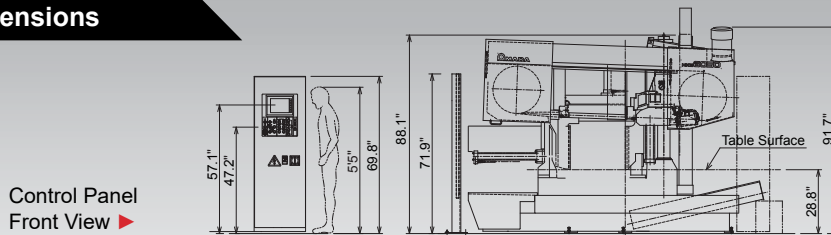
- CNC CUTTING CONTROL WITH HYDRAULIC PRESSURE
- AUTO TRIM CUT FUNCTION
- QUICK APPROACH
- CHIP CONVEYOR
- FULL CAPACITY VISES
- AUTOMATIC BLADE GUIDE SETTING
- SELF DIAGNOSTICS
- BLADE DEVIATION MONITOR
- 78.7" SINGLE INDEX STROKE
- FRONT PULLING VISE
- VISE PRESSURE CONTROL VALVE

OPTIONAL FEATURES

- LIGHT BEAM MARKING

Specifications may change without notice at the sole discretion of Amada's Engineering Department.

Dimensions



- ⚠ Before using this product, please read the operator's manual carefully and follow all applicable instructions.**
- When using our products, safety equipment is required depending on the operational task.

* Specifications, appearance and equipment are subject to change without notice by reason of improvement.
 * Please use the machine model name as HKB6050CNC, when applying for administration applications.
 * For any inquires, please contact local Amada Machinery America, Inc. office.

© AMADA MACHINERY AMERICA, INC. All Rights Reserved.

AMADA
AMADA MACHINERY AMERICA, INC.

100 S Puente St · Brea, CA 92821
 Phone: 847.285.4800 · Fax: 847.519.2127

www.amadamca.com

