

DWG. (mm)	0.5-6	6-30	30-120	120-315	315-1000	1000-2000
Surf. Toler.	±0.1	±0.2	±0.3	±0.5	±0.8	±1.2

### HPSAW310 SPECIFICATIONS

capacity	Round	φ 1.97 ~ φ 12.20
Product size	Product length	0.39 ~ 23.62 in
	Minimum remnant length	1.97 in (Excluding material chamfer)
Blade	Type	AXCELA HP1
	Speed	49 ~ 1312 fpm
	Size	2-5/8 × 0.063 × 289 in.
	Blade	22kw × 4P
Motors	Saw feed	1.0kw (AC servo motor)
	Work feed	1.0kw (AC servo motor)
	Hydraulic	3.7kw × 4P
	Cutting fluid	0.18kw × 2P
	Highpressure coolant	Supply : 0.74kw × 2P, 1.28kw × 4P Discharge : 1.5 kw × 4P
	Wire brush	0.4kw × 4P
	Chip conveyor	0.1kw × 4P
Supply voltage	Three-phase AC200V±10% (50/60Hz) , 220V±10% (60Hz)	
Power required	60kVA	
Feed vise	stroke	23.62 in
Wire brush	Automatic follow-up dual wire brushes	
Guide bracket	Automatic follow-up with the width of main vise	
Chip conveyor	Motor-driven wide scraper type	
Hydraulic tank capacity	8 US gal	
Cutting fluid tank capacity	106 US gal	
Allowable loading mass on machine	2426 lb (Within machine body)	
Table height	37in	
Machine dimensions	169.6 × 106.6 × 92.7in Width Depth Height	
Machine weight	17640 lb	

### Standard function,device

(LED) Work light	Low cutting fluid sensor
Head-end positioning function	Blade deviation monitor
High-pressure coolant unit	Signal tower (red, amber and green LEDs)

### Optional function,device

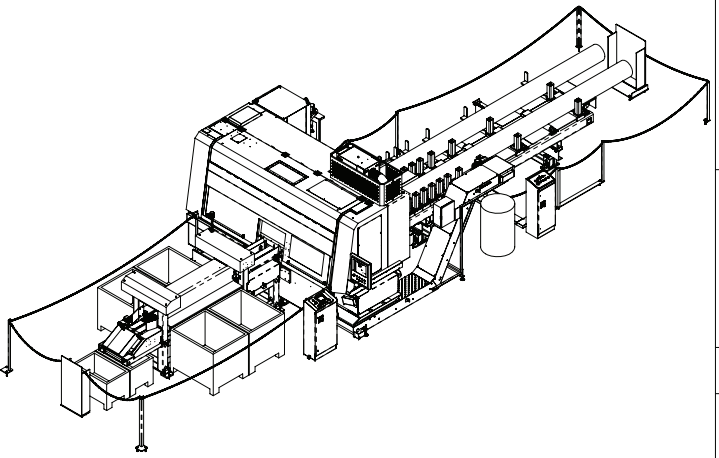
Separate chip conveyor	Mist collector
Chip compactor	

### Return conveyor: OP

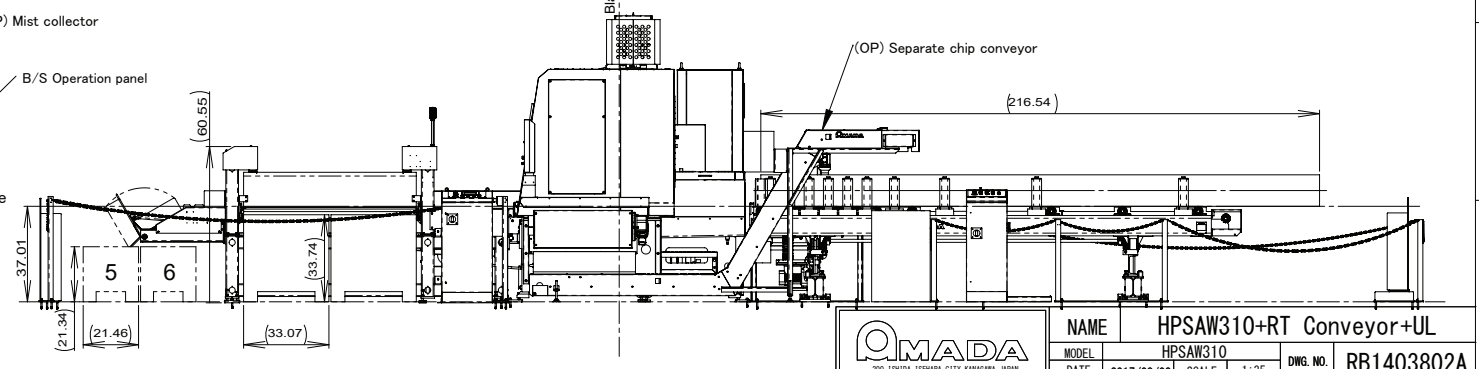
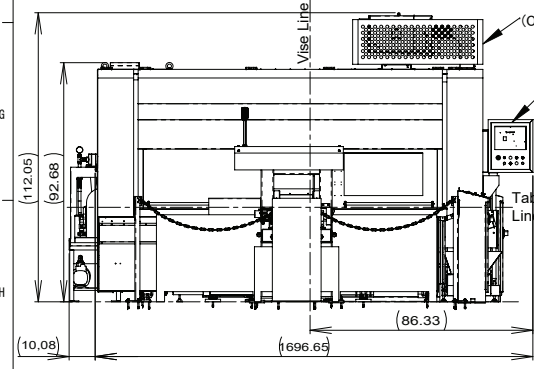
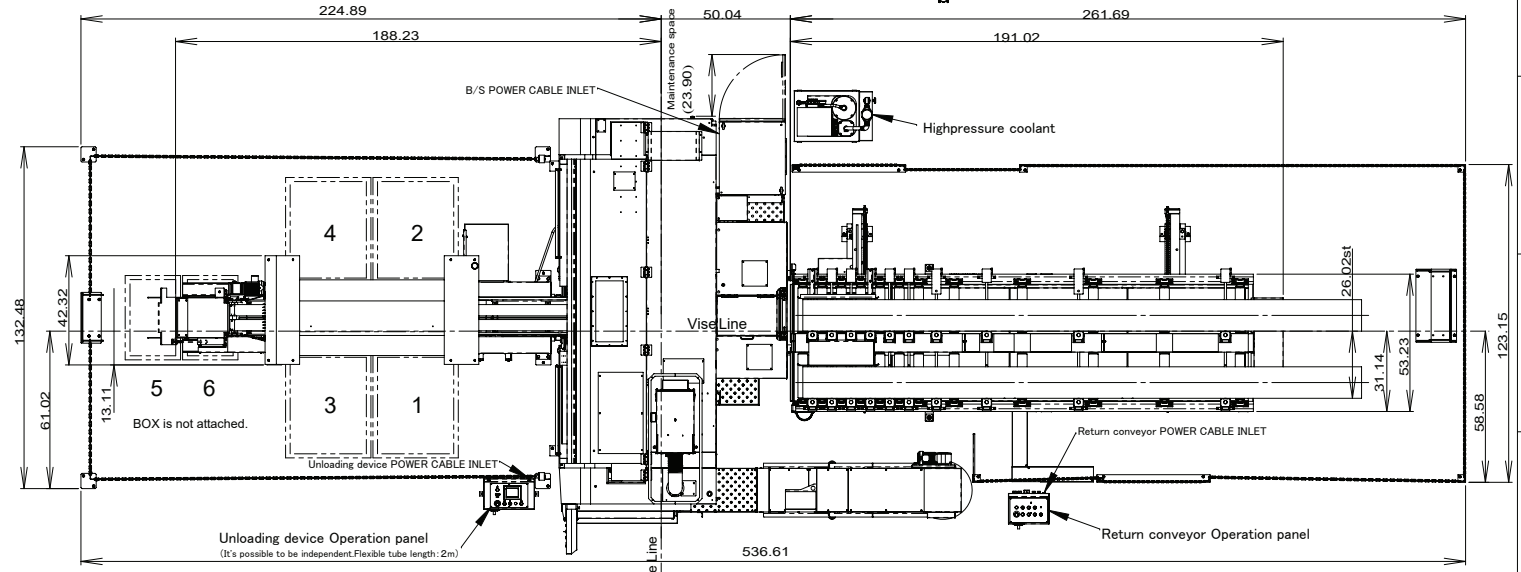
Extent of capacity	Round	φ 1.97 ~ φ 12.20
	Feeding lane No. 1	0.4kw × 4P
	Feeding lane No. 2	0.4kw × 4P
Motors	Traverse feeding	0.2kw × 4P
	Feed length	15.75 ~ 216.54in
Remant returning length	15.75 in or more	
Number of lane	2 lane	
Supply voltage	( Three-phase ) AC200V±10% ( 50/60Hz ) , 220V±10% ( 60Hz )	
Power required	1.6kVA	
Feed speed	45.93 fpm	
Traverse speed	9.19 fpm	
Table height	37in	
Machine dimensions	126.69 × 265.20 × 48.35in Width Depth Height	
Maximum loading weight	2205lb	
Machine weight	4850lb	

### Unloading device: OP

Unloading Position	Unloading Length		
	1	All length can carry out. (※1)	
2	The length that can stand rolling out to table. (※2)		
	3	All length can carry out. (※1)	
4	The length that can stand rolling out to table. (※2)		
	5	The length that can not stand	
6	trimming and less than 15.75in of Remnant material		
	Motors	Hydraulic	1.5kw × 4P
	conveyor	0.4kw × 4P	
Supply voltage	( Three-phase ) AC200V±10% ( 50/60Hz ) , 220V±10% ( 60Hz )		
Power required	3.9kVA		
Machine dimensions	54.33 × 153.54 × 75.31in Width Depth Height		
Machine weight	3308lb		



※1 The products which can not stand are left on the chute.  
 ※2 Standing length: Diameter x 0.2 x 1.57in or more.



NAME	HPSAW310+RT Conveyor+UL		
MODEL	HPSAW310		
DATE	2017/08/02	SCALE	1:35
DWG. NO.	RB1403802A		