

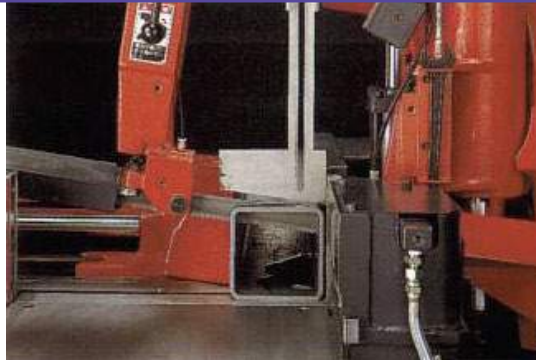
HK400 and HKA400



HK400 and HKA400 Manual/Automatic Metal-Cutting Miter Bandsaws

The HK400 and HKA400 bring mitering capability to our proven H Series designs. The HKA400 includes fully automatic operation for enhanced productivity and ease of operation. Both machines offer a host of features designed to maximize cutting performance and reliability and are ideal for cutting structural steel sections.

HK400 and HKA400



Rigid Double Post



Front Vise

Features

Saw Head Frame—The rigid “C” section frame carries the mountings for the two band wheels, heavy-duty worm gear drive reducer, band drive motor, and guide arm mounting supports.

Band Wheels and Drive System—The inverter-controlled band drive motor is directly coupled to the worm gear reducer, eliminating the friction losses found in variable-speed pulley drive systems. The drive wheel transmission is designed and manufactured by Amada to provide high-efficiency speed reduction (with no external cooling required) to deliver more power to the drive wheel. Band speed is set using the band speed adjustment knob on the control panel.

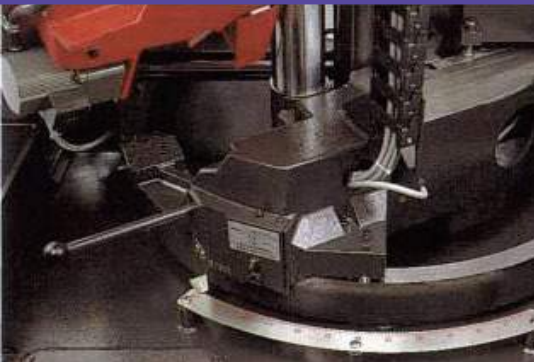
Canted Head and Single-Column Mounting—The head is canted 8° to enable the machine to cut rolled sections (e.g., I-beams or rectangular tubing) at significantly faster rates as the blade is never in full contact with the horizontal section of the material. The single-column mounting enables the saw guides to be much closer together, as compared to scissor-type machines, which improves the cutting

performance.

Full-Stroke Clamping Vise—The full-stroke clamping vise reduces the operator setup time for different widths of material.

Manual Vise Inching Control—The vise inching control enables the operator to more accurately locate the workpiece for the cut by inching the vise. Then, with the help of the shadow line projector, the operator can make any small adjustments necessary to the position for the desired cut.

Guarding—The saw band is covered by heavy-gauge guarding in all non-cutting areas, improving operator safety.



Up to 60° Miter



Easy Operation

NC Functions

- Automatic kerf compensation
- 1 cut-off length from the same bar
- Number of pieces required
- Number of pieces cut

STANDARD FEATURES	HK400	HKA400
8° saw head cant	•	•
60° miter capability	•	•
Auto index (only at 0°)		•
Direct drive	•	•
Full-stroke vise	•	•
Inverter blade speed control	•	•
Light beam marking	•	•
Post-construction saw head	•	•

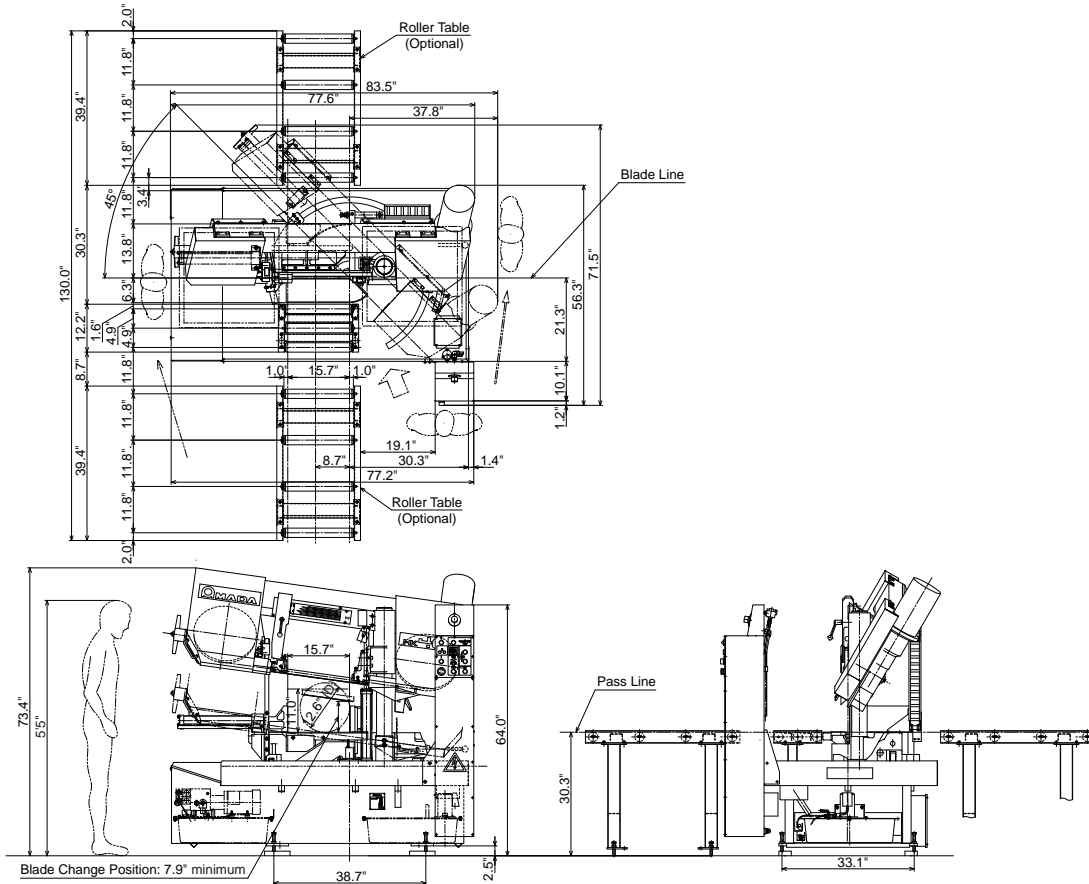
OPTIONAL ACCESSORIES	HK400	HKA400
Roller table 6.5' (2 m)	•	•
Roller table 10' (3 m)	•	•
Vertical clamp (must be factory ordered)	•	•

HK400 and HKA400

HK400 Machine Specifications

CAPACITY	Cutting capacity	Round (diameter)	12.6" (at 90°)	320 mm (at 90°)	
			8.9" (at 45°)	220 mm (at 45°)	
			3.9" (at 60°)	100 mm (at 60°)	
	Rectangle (W x H)		16" x 11" (at 90°)	400 x 280 mm (at 90°)	
			8.9" x 11" (at 45°)	220 x 280 mm (at 45°)	
			3.9" x 11" (at 60°)	100 x 280 mm (at 60°)	
Work load capacity			880 lb	400 kg	
BLADE AND VISE OPERATION	Saw blade	Dimensions (L x T x W)	12'9" x 0.042" x 1.25"	3885 x 1.066 x 32 mm	
		Blade speed	100~325 ft/min, by inverter	30~100 m/min, by inverter	
		Tension control	Manual, split clutch		
	Blade control	Top limit setting	Manual setting dial		
		Cutting control	Hydraulic flow control valve		
	Vise operation	Type	Single vise		
Control		Hydraulic full-stroke cylinder			
MOTORS	Saw blade motor	3 HP	2.2 kW		
	Hydraulic pump motor	1 HP	0.75 kW		
	Cutting fluid pump motor	1/10 HP	0.06 kW		
POWER REQUIREMENTS	Power supply voltage	AC220 ± 10%, 3 PH, 60 Hz (all other voltages require a transformer)			
	Power requirement	5.5 kVA			
CUTTING FLUID AND HYDRAULIC	Cutting fluid	Tank capacity	10.7 gal	40 liters	
		Pump type	Electric		
	Hydraulic	Tank capacity	10.7 gal	40 liters	
		Pressure setting	391 psi	2.7 MPa (27 kgf/cm ²)	
CHIP DISPOSAL	Manual				
MATERIAL INDEX	Index mechanism	N/A			
	Stroke	N/A			
	Length	N/A			
	Number of input stations	N/A			
	Number of cut-off pieces	N/A			
	Remnant length	N/A			
DIMENSIONS AND WEIGHT	Machine dimensions (W x L x H)	Head up position	77.6" x 56.3" x 73.4"	1970 x 1430 x 1865 mm	
		Head down position	77.6" x 56.3" x 64.0"	1970 x 1430 x 1625 mm	
	Table height (above floor)	30.3"		770 mm	
	Machine weight	1990 lb		900 kg	

Floor Layout



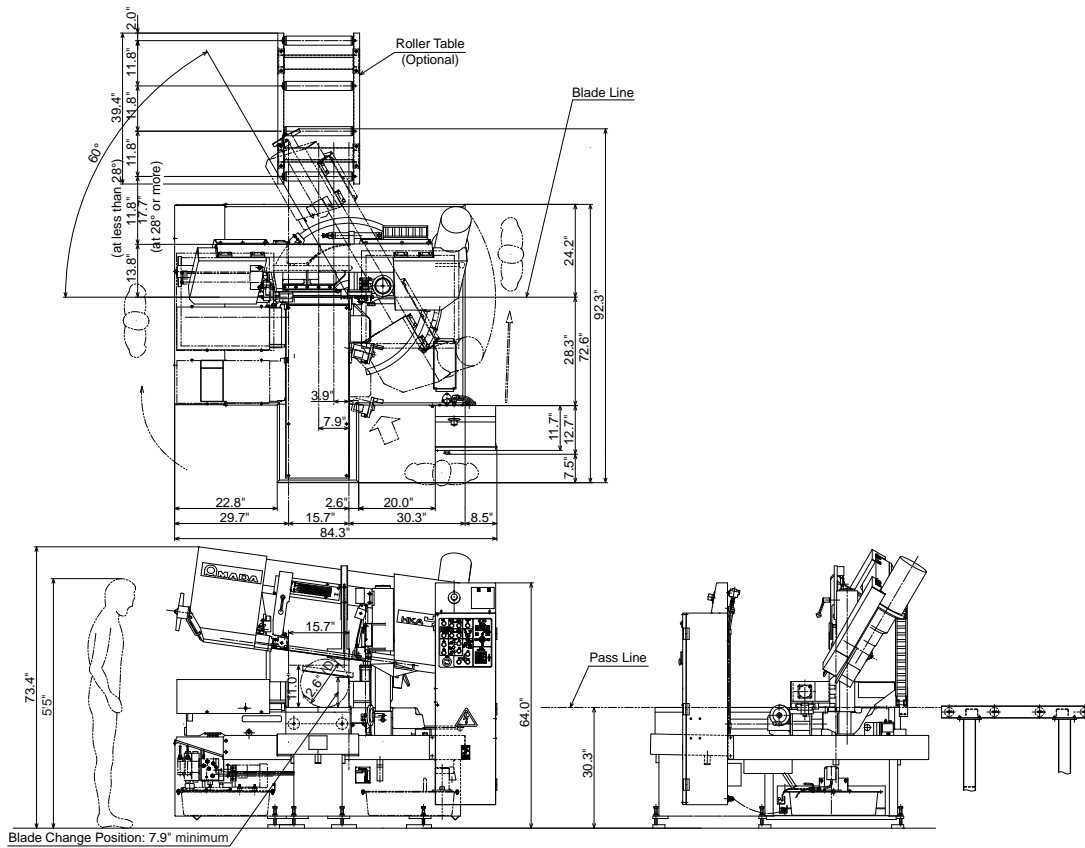
* Specifications may change without notice at the sole discretion of Amada's Engineering Department.

HK400 and HKA400

HKA400 Machine Specifications

CAPACITY	Cutting capacity	Round (diameter)	12.6" (at 90°)	320 mm (at 90°)	
			8.9" (at 45°)	200 mm (at 45°)	
			3.9" (at 60°)	100 mm (at 45°)	
	Rectangle (W x H)		16" x 11" (at 90°)	400 x 280 mm (at 90°)	
			8.9" x 11" (at 45°)	220 x 280 mm (at 45°)	
			3.9" x 11" (at 60°)	100 x 280 mm (at 60°)	
Work load capacity		880 lb	400 kg		
BLADE AND VISE OPERATION	Saw blade	Dimensions (L x T x W)	12'9" x 0.042" x 1.25"	3885 x 1.066 x 32 mm	
		Blade speed	100~325 ft/min, by inverter	30~100 m/min, by inverter	
		Tension control	Manual, split clutch		
	Blade control	Top limit setting	Automatic setting with quick approach feeler		
		Cutting control	Hydraulic flow control valve		
	Vise operation	Type	Front and main vise		
Control		Hydraulic full-stroke cylinder			
MOTORS	Saw blade motor	3 HP	2.2 kW		
	Hydraulic pump motor	1 HP	0.75 kW		
	Cutting fluid pump motor	1/10 HP	0.06 kW		
POWER REQUIREMENTS	Power supply voltage	AC220 ± 10%, 3 PH, 60 Hz (all other voltages require a transformer)			
	Power requirement	10.7 kVA			
CUTTING FLUID AND HYDRAULIC	Cutting fluid	Tank capacity	10.7 gal	40 liters	
		Pump type	Electric		
	Hydraulic	Tank capacity	10.7 gal	40 liters	
		Pressure setting	391 psi	2.7 MPa (27 kgf/cm ²)	
CHIP DISPOSAL	Manual				
MATERIAL INDEX	Index mechanism	Shuttle vise			
	Stroke	15.7"	400 mm		
	Length	2.4"~39.3"	60~999.9 mm		
	Number of input stations	1			
	Number of cut-off pieces	1~9999			
	Remnant length	2.8" plus length of parts	70 mm plus length of parts		
DIMENSIONS AND WEIGHT	Machine dimensions (W x L x H)	Head up position	84.3" x 92.3" x 73.4"	2140 x 2345 x 1865 mm	
		Head down position	84.3" x 92.3" x 64.0"	2140 x 2345 x 1625.5 mm	
	Table height (above floor)	30.3"		770 mm	
	Machine weight	3528 lbs.		1600 kg	

Floor Layout



* Specifications may change without notice at the sole discretion of Amada's Engineering Department.